



A Project By

Singnapurkar
CONSTRUCTIONS

GOA!

The Tourism Capital of India

Enjoys in excess 2.5 million visitors per year. A favorite destination for Indian and Foreign tourists from around the world, with a pleasant climate, lush greenery, golden sandy beaches, award winning seafood and amazing night life.

Coupled with rich traditions including fun-filled festivals, cuisine, magnificent churches, temples, forts, tropical spice plantations and water sports, ensures Goa has something for everyone...



COLVALE!

Colvale is a village ornamented by the lush green paddy fields and the riverine charm of the Chapora river, over which is a rustic steel bridge which is a major factor for boosting trade and commerce from this village to other parts of Goa.

Colvale is believed to have landmarks of KING PORUS reign who defeated ALEXANDER the Great, its also famous for the abundant availability of Murdoshi (lady fish) and Cashew Feni. It was a important place of trade and commerce during the rule of Portuguese, Marathas and the Dutch.





ABOUT PROJECT:

Casa Dos Senhores is a luxurious project taking shape in lush green village of Colvale, surrounded by green fields, rolling hills and coconut groves. Its just next to the 4 Lane National Highway and closest to Colvale Industrial Estate, yet very peaceful.

The project consist of 8 spacious apartments that have been designed and crafted with premium specifications, fittings and finishings to give you an opportunity to have a great home with all luxurious facilities.

CASA DOS SENHORES





AMENITIES

- 🔑 Gated Property with 24hrs Security
- 🌿 Landscape Garden
- 🔑 Uninterrupted Hot & Cold Water Supply
- 🔑 Rooftop Power Gym
- 🔑 Uninterrupted power supply common area
- 🔑 Night vision CCTV Surveillance

SPECIFICATIONS & AMENITIES



STRUCTURE :

Earthquakes resistant RCC Framed structure, as approved by T&C Planning Department.
Internal & External Wall with natural stone, thick brick masonry or cement concrete blocks.



TILING :

Staircase and Landing are a combination of natural stone / ceramic tiling / vetrified tiles.
Internal flooring will be superior quality vitrified tiling.
Bath / Toilet are good quality ceramic tiles.



DOORS :

Modular wooden constructed / veneered doors with high quality fittings.



WINDOWS :

UPVC / Aluminium Powder coated glazed shutters for all windows and other external openings.
Ventilator in powder coated aluminium.



KITCHEN :

Kitchen platform will be in Granite with SS sink.



TOILET :

Bathroom with CPVC piping and hot & cold mixers, premium quality sanitary ware with Jaguar bath fittings.



ELECTRICAL :

Concealed electrical conduits with high quality switches with provision for AC and TV.



DÉCOR :

Interior - Asian Paints Premium Emulsion.
Exterior - Apex All Weather Protection Paint.



Accessibility is the Key

Casa Dos Senhores is ideally located close to all amenities like Market, Hospital, River, Beaches, Night Clubs, Airport, Railway Station, Bus Stand, Industrial Estate Etc.



MARKET



HOSPITAL



RIVER, BEACHES



NIGHT CLUBS



AIRPORT



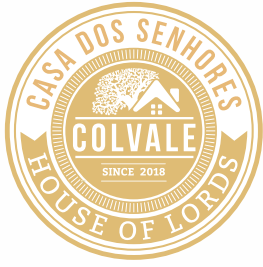
RAILWAY STATION



BUS STAND



INDUSTRIAL ESTATE



FLOOR PLANS

FIRST FLOOR 3D ELEVATION

Single BHK





FLOOR PLANS

FIRST FLOOR PLAN

Single BHK





FLOOR PLANS

SECOND FLOOR 3D ELEVATION

Two BHK with ATTIC



COLVALE

SINCE 20

HOUSE OF



FLOOR PLANS

SECOND FLOOR PLAN

Two BHK with ATTIC





FLOOR PLANS

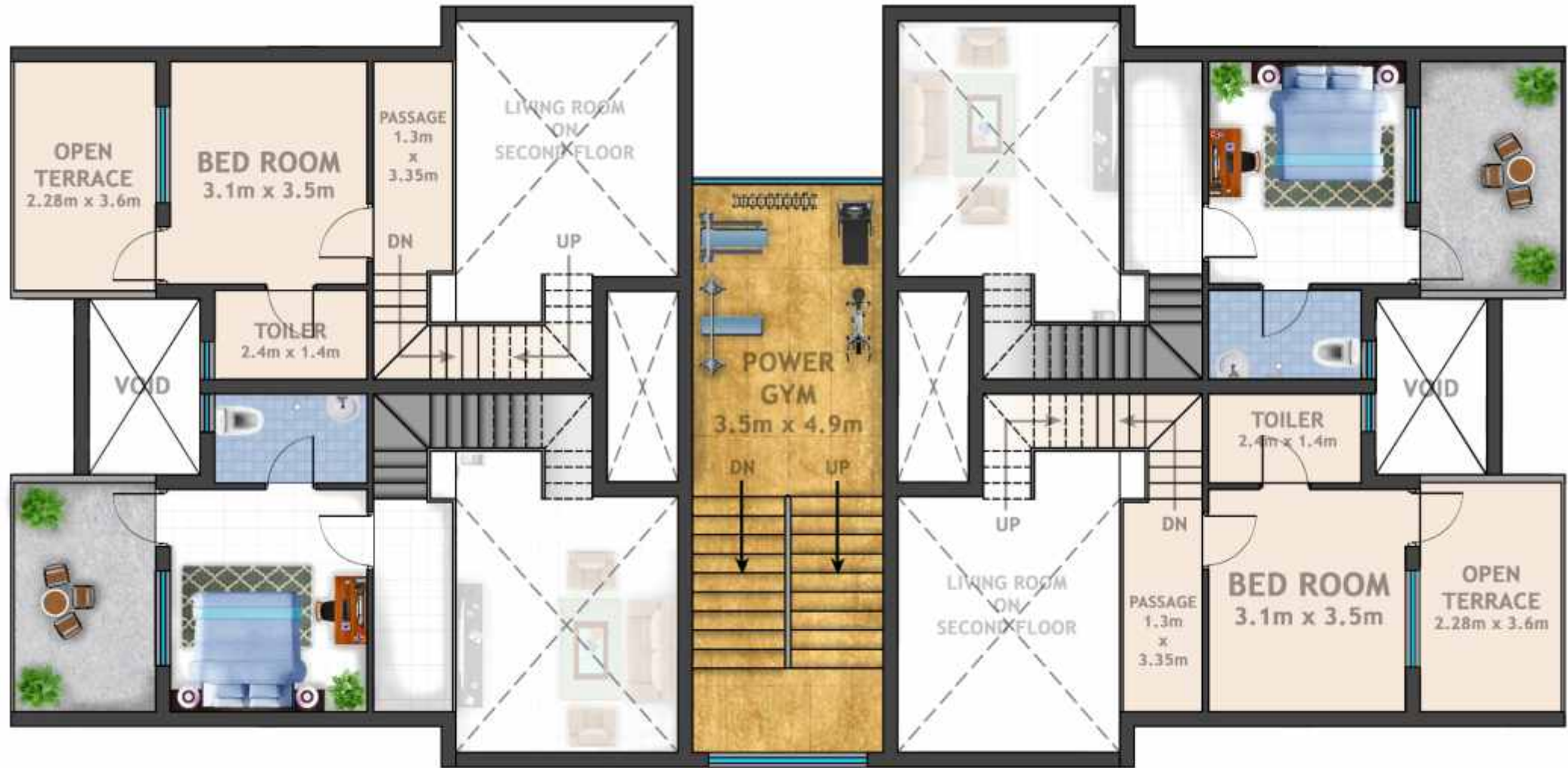
ATTIC FLOOR 3D ELEVATION





FLOOR PLANS

ATTIC FLOOR PLAN





CASA DOS SENHORES

Survey 242/2, Sant Anthony Wado, Colvale, Bardez - Goa

Phone no : +91 7709899990

Email : sales@singnapurkar.com

Web : www.singnapurkar.com

A Project By

Singnapurkar 
CONSTRUCTIONS